

Self-Guided Tour

Walking Route I

Welcome to SRJC! While enjoying the self-guided tour, a respectful and quiet manner is appreciated in order to not interrupt student learning at SRJC. Visitors are asked to not block walkways and doorways. Chaperones should guide the students in using caution while walking and to cross streets only at electronic crosswalks. In case of an emergency while at SRJC, please call District Police at 707-527-1000.



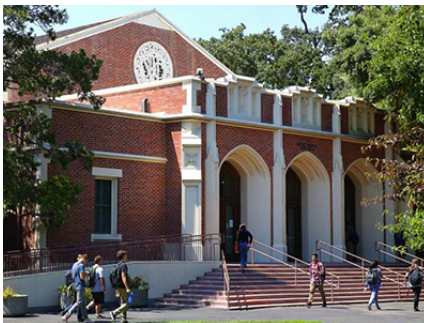
BURDO CULINARY ARTS CENTER

- Culinary Arts: Front of the House; Baking & Pastry; Catering; Restaurant Management
- Introductory classes include: Safety/Sanitation; Knife Skills; Culinary Survey courses
- Much of their fresh meats, produce, and wine come from SRJC's Shone Farm in Forestville
- Culinary Café & Bakery is open year round on Wed, Thu & Fri



FORSYTH HALL

- Voice: Solo; Concert Choir; Chamber Singers
- Music Appreciation & History; Digital Music
- Instrumental: Guitar; Orchestral; Brass; Piano & Jazz Studies
- Performances offered throughout the year, often at a nominal cost (\$5 - \$10)



BURBANK AUDITORIUM

- Known for high quality theatre productions
- Students gain technical skills: Stagecraft; Costuming; Makeup; Theater Management
- Students come from all over the U.S. to participate in Summer Repertory Theater
- Classes in Media & Communications; Award-winning Forensics Team



TAUZER GYM & QUINN SWIM CENTER

- Combative sports: Judo; Karate; Boxing; Wrestling; Fencing
- Team sports: Track & Field; Basketball; Football; Baseball; Water polo; Soccer; Volleyball
- Dance: Ballet; Hip Hop; Funk; Choreography
- General fitness: Pilates; Body Conditioning; Yoga; Weight Training
- Kinesiology lecture courses; Sports Medicine



MAGGINI HALL

- Business; Office Technology; Computer Studies
- Entrepreneurship; Sales & Marketing; Accounting
- Cyber Security; Computer Programming
- Digital Media (Web, Graphic, Video, Game Design) & Animation
- Award-winning Adobe Certified Training Provider



LARK HALL

- Geology; Astronomy; Planetarium; Agriculture; Agribusiness
- Horticulture; Wine Studies; Animal Science
- Planetarium shows open to the public
- Most of the Agriculture programs take place at Shone Farm
- Sustainable Ag program prepares local farmers



BAKER HALL

- Life Sciences: Anatomy; Physiology; Biology
- Students dissect and study animal and human cadavers
- Nursing students complete prerequisites here



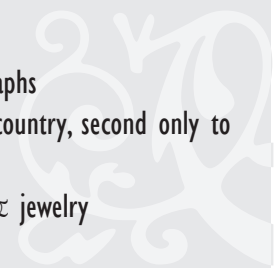
SHUHAW HALL

- Math; Engineering; Physics; Applied Technology
- SRJC's Math courses have reputation for being rigorous
- Students are well prepared for transfer
- Electronics; Solar Installation; Architecture; Drafting/CAD; Animation



JESSE PETER MULTICULTURAL MUSEUM

- More than 4000 cataloged items, including art objects and photographs
- Home to one of the largest Pomo Indian basket collections in the country, second only to the Smithsonian Museum in Washington, D.C.
- Art forms include: ceramics; basketry; beadwork; sculpture; textiles & jewelry





DOYLE LIBRARY

- State-of-the-art learning resource center; extensive Media library; open to the public
- Named after Frank Doyle, former Exchange Bank President who left 51% of bank shares to SRJC's Doyle Scholarship fund (Your high school grades are worth \$\$ for college when you maintain a 2.75 GPA)



BERTOLINI STUDENT CENTER

- First Floor: Student Affairs; Associated Students (student government); Campus Clubs; Café & Dining Hall
- Second Floor: Counseling; EOPS; Foster Youth
- Third Floor: MESA; Transfer Center; Student Employment; Career Services; Disability Resources



EMERITUS HALL

- English; Anthropology; History; Political Science; Philosophy; Languages; Humanities; Social & Behavioral Sciences; Psychology
- Newman Auditorium: lectures; concerts; theatrical performances; special events



RACE BUILDING

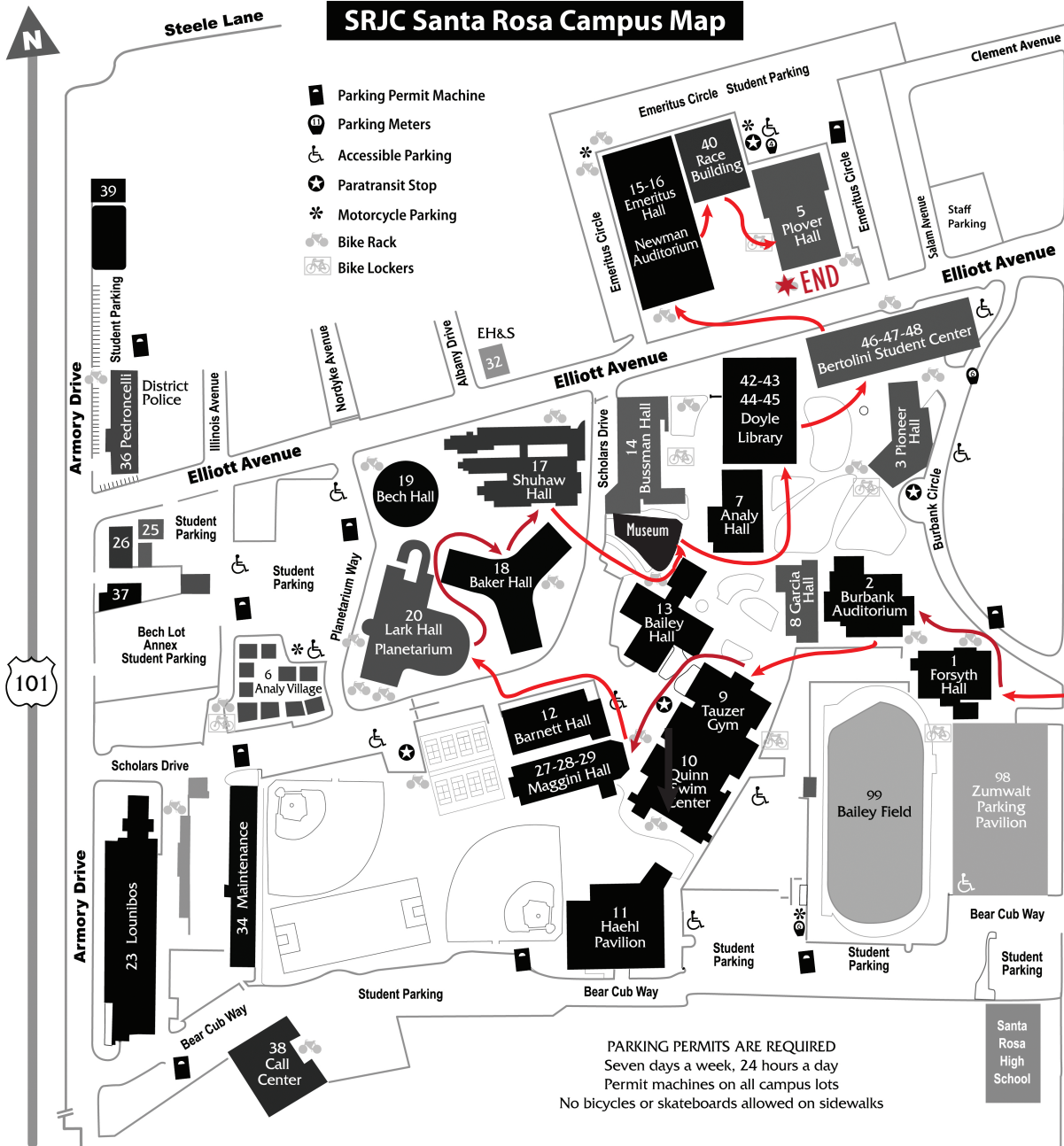
- Health Sciences Programs: Dental; Radiologic Technology; Pharmacy Technology; Nursing
- Student Health Services
- Clinic is designed to be used for emergency care in the event of a major disaster, like an earthquake



PLOVER HALL

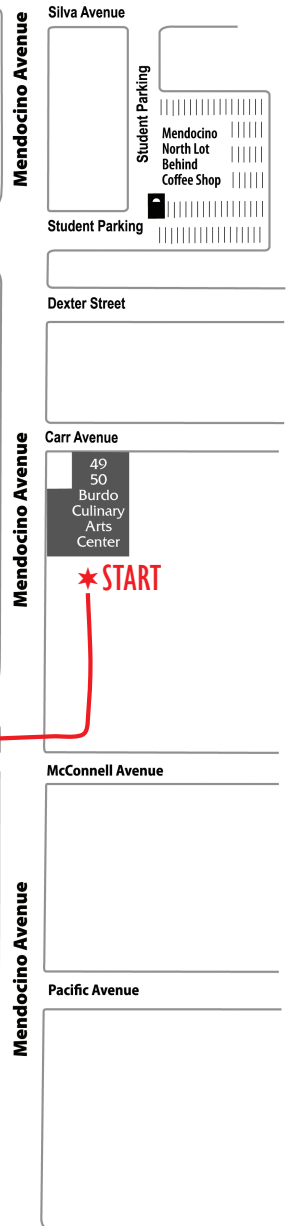
- Formerly the SRJC Library; interior wood paneling repurposed from original library shelving
- Student Services including: Admission & Records; Assessment & GED Services
- Financial Aid & Scholarship Programs
- Student Psychological Services
- Veterans Affairs & Student Equity Office

SRJC Santa Rosa Campus Map



- Parking Permit Machine
- Parking Meters
- Accessible Parking
- Paratransit Stop
- Motorcycle Parking
- Bike Rack
- Bike Lockers

Self-guided Tour Walking Route I



PARKING PERMITS ARE REQUIRED
 Seven days a week, 24 hours a day
 Permit machines on all campus lots
 No bicycles or skateboards allowed on sidewalks

NO.	BUILDING NAME	NO.	BUILDING NAME	NO.	BUILDING NAME	NO.	BUILDING NAME	NO.	BUILDING NAME
1	Norton Forsyth Hall (100-199) Music	7	Analy Hall (700-799) Art/Photography	15-16	Emeritus Hall (1500-1699) Liberal Arts Newman Auditorium	32	(1808 Albany) Environmental Health & Safety	46/47/48	(4600-4899) Lawrence A. Bertolini Student Center
2	Burbank Auditorium (200-299) Communication Studies Theatre Arts	8	A. M. Garcia Hall (800-899) Consumer & Family Studies	17	W. W. Shuhaw Hall (1700-1799) Engineering Physics Math	34	Facility Operations	36	Christine Pedroncelli Center District Police
3	Pioneer Hall (300-399) Assistive Technology Lab SRJC Bookstore College to Career WorkAbility	9	C. J. Tauzer Gym (900-999)	18	Milo Baker Hall (1800-1899) Life Sciences	37	Lucius I. Button Building Human Resources Payroll V.P. Human Services	37	Lucius I. Button Building Human Resources Payroll V.P. Human Services
5	Bernard C. Plover Hall (500-599) Admissions & Records Assessment & GED Services Financial Aid Scholarship Programs Student Psychological Services Veteran's Affairs	10	Robert Quinn Swim Center (1000-1099)	19	George Bech Hall (1900-1999) Chemistry	38	Robert Call Child Dev. Center Center Offices & Pre-school Child Development	38	Robert Call Child Dev. Center Center Offices & Pre-school Child Development
6	Analy Village (600-699) Adaptive P. E. Disability Resources Testing Office College Skills Community Education Copy Center OakLeaf Newsletter Traffic School/Alive at 25	11	Walter Haehl Pavilion (1100-1199)	20	Warne Lark Hall (2000-2099) Agriculture/Natural Resources Earth & Space Sciences Greenhouse Planetarium	39	Custodial Building	39	Custodial Building
		12	Ellsworth Barnett Hall (1200-1299) English as a Second Language Healthcare Workforce Dev. Prog.	21	John Lounibos Center (2300-2399) Auto/Diesel Technology Machine Technology Welding	40	William B. Race Health Sciences Bldg. Health Sciences Student Health Services	40	William B. Race Health Sciences Bldg. Health Sciences Student Health Services
		13	Floyd P. Bailey Hall (1300-1399) Accounting Facility Planning & Operations President/Supervisor Purchasing V.P. Academic Affairs V.P. Business Services	22	Graphic Services	42/43/44/45	(4200-4599) Frank P. Doyle Library Art Gallery CATE/Distance Education Center for New Media Media Services Tutorial Services	42/43/44/45	(4200-4599) Frank P. Doyle Library Art Gallery CATE/Distance Education Center for New Media Media Services Tutorial Services
		14	Peter W. Bussman Hall (1400-1499) Information Technology Electronics SRJC Museum Staff Development	23	John Lounibos Center (2300-2399) Auto/Diesel Technology Machine Technology Welding	49/50	(4900-5099) B. Robert Burdo Culinary Arts Center Culinary Café Bakery	49/50	(4900-5099) B. Robert Burdo Culinary Arts Center Culinary Café Bakery
				25	Graphic Services	98	Don Zumwalt Parking Pavilion	98	Don Zumwalt Parking Pavilion
				26	SRJC Foundation/Public Relations	99	Floyd P. Bailey Field	99	Floyd P. Bailey Field
				27/28/29	(2700-2999) Albert Maggini Hall Business Administration Computer Studies				